



GMT Constitutional Area 1, Group F

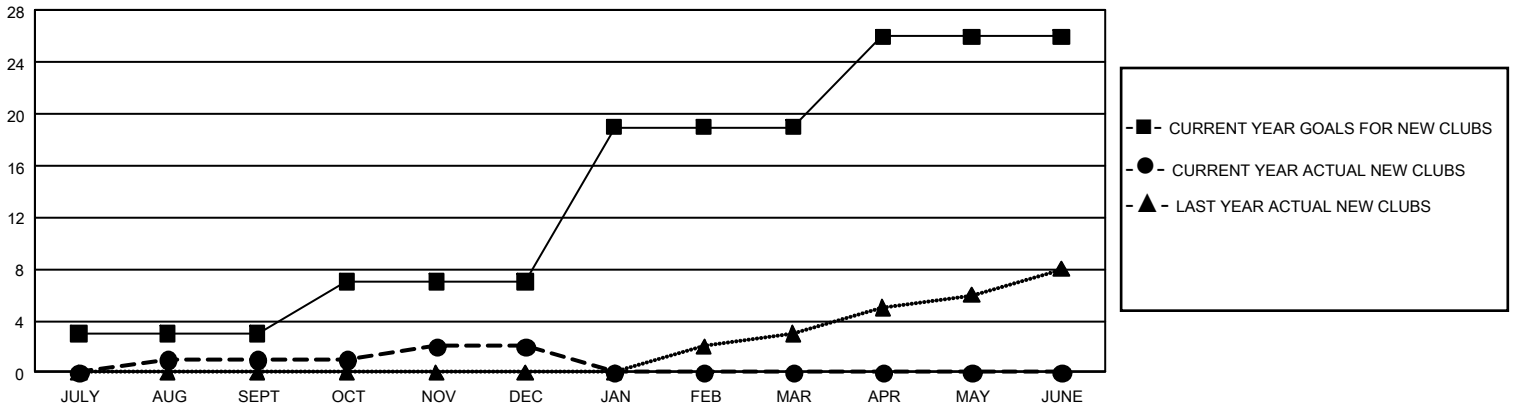
GMT: OPEN

REPORT DOES NOT INCLUDE CLUBS IN UNDISTRICTED AREAS.

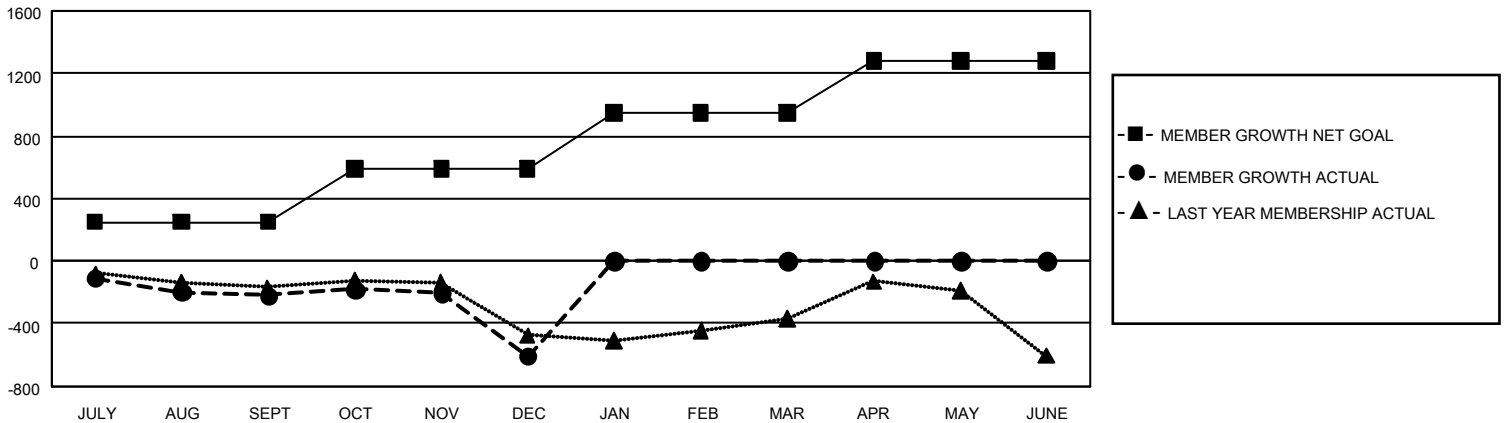
Clubs			
RESULTS FOR 2019-2020			
QUARTER	NEW CLUB GOAL	NEW CLUBS	DROPPED CLUBS
JULY/AUG/SEPT	9	1	5
OCT/NOV/DEC	12	1	16
JAN/FEB/MAR	36	0	0
APR/MAY/JUNE	21	0	0

Members			
RESULTS FOR 2019-2020			
QUARTER	MEMBER GROWTH NET GOAL	MEMBER GROWTH ACTUAL	DROPPED MEMBERS ACTUAL (including transfers)
JULY/AUG/SEPT	750	555	691
OCT/NOV/DEC	1,020	578	908
JAN/FEB/MAR	1,068	0	0
APR/MAY/JUNE	1,011	0	0

GOALS AND ACTUAL NEW CLUBS CUMULATIVE



GOALS AND ACTUAL MEMBERS CUMULATIVE



DROPPED CLUBS: 21	360 CLUBS OF 914 ADDED 1 OR MORE NEW MEMBERS	<u>GENDER DISTRIBUTION</u>	
<u>DROPPED MEMBERS</u>		MALE	15,681 (63.42%)
DECEASED	171	FEMALE	9,045 (36.58%)
CLUB CANCELLED	188	TOTAL FAMILY UNIT MEMBERS 4,409	
OTHER	1,239	FAMILY MEMBERS PAYING HALF DUES 2,287	
TOTAL	1,598		

[CLICK HERE FOR CUMULATIVE MEMBERSHIP DATA](#)